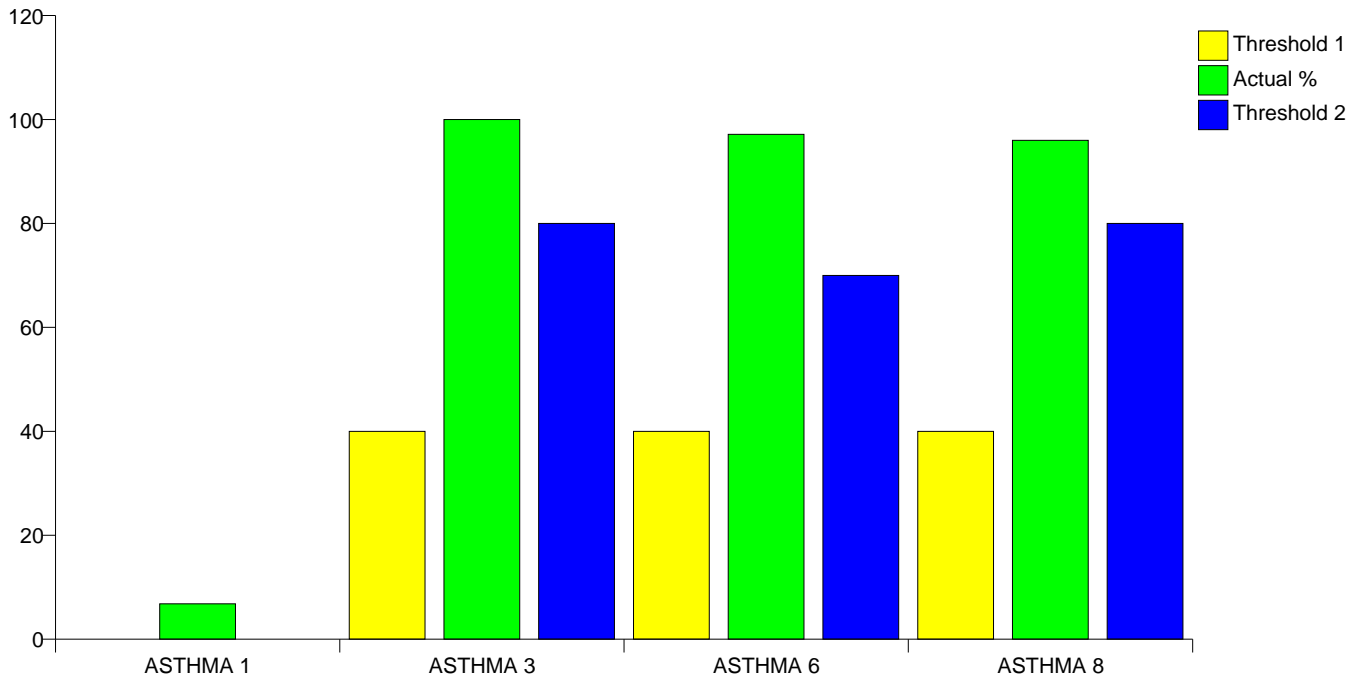


Practice Code: 16507  
Eyemouth Medical Practice

018907 50599

### Asthma



Clinical Indicator	Number of Patients	Actual %	Minimum Threshold %	Maximum Threshold %
ASTHMA 1	429	6.82	0	0
ASTHMA 3	46	100.00	40	80
ASTHMA 6	342	97.16	40	70
ASTHMA 8	24	96.00	40	80

<b>Clinical Indicators for Asthma</b>	
ASTHMA 1	The practice can produce a register of patients with asthma, excluding patients with asthma who have been prescribed no asthma-related drugs in the previous twelve months
ASTHMA 3	The percentage of patients with asthma between the ages of 14 and 19 in whom there is a record of smoking status in the previous 15 months
ASTHMA 6	The percentage of patients with asthma who have had an asthma review in the previous 15 months
ASTHMA 8	The percentage of patients aged eight and over diagnosed as having asthma from 1st April 2006 with measures of variability or reversibility

## Records

### ASTHMA 1

Number of Patients Registered with Practice	6293
Number of Patients with asthma, prescribed asthma related drugs in previous 12 months	429
As % of patients registered with practice	6.8171%

## Initial Management

### ASTHMA 8

Number of Patients aged 8 years and over with asthma (diagnosed after 1st April 2006), prescribed asthma related drugs in previous 12 months except where relevant exclusions for Asthma 8 apply	25
Number of Patients with asthma confirmed by spirometry or peak flow testing	24
As % of patients diagnosed with asthma after 01/04/03	96%

## Ongoing Management

### ASTHMA 3

Number of Patients aged 14 to 19 with asthma, prescribed asthma related drugs in previous 15 months except where relevant exclusions for Asthma 3 apply	46
Number of Patients, 14 to 19, whose notes record smoking status within last 15 months	46
As % of patients 14 to 19 with asthma	100%

### ASTHMA 6

Number of Patients with asthma, prescribed asthma related drugs in previous 15 months except where relevant exclusions for Asthma 6	352
Number of Patients who have had an asthma review in previous 15 months	342
As % of patients diagnosed with asthma	97.1591%