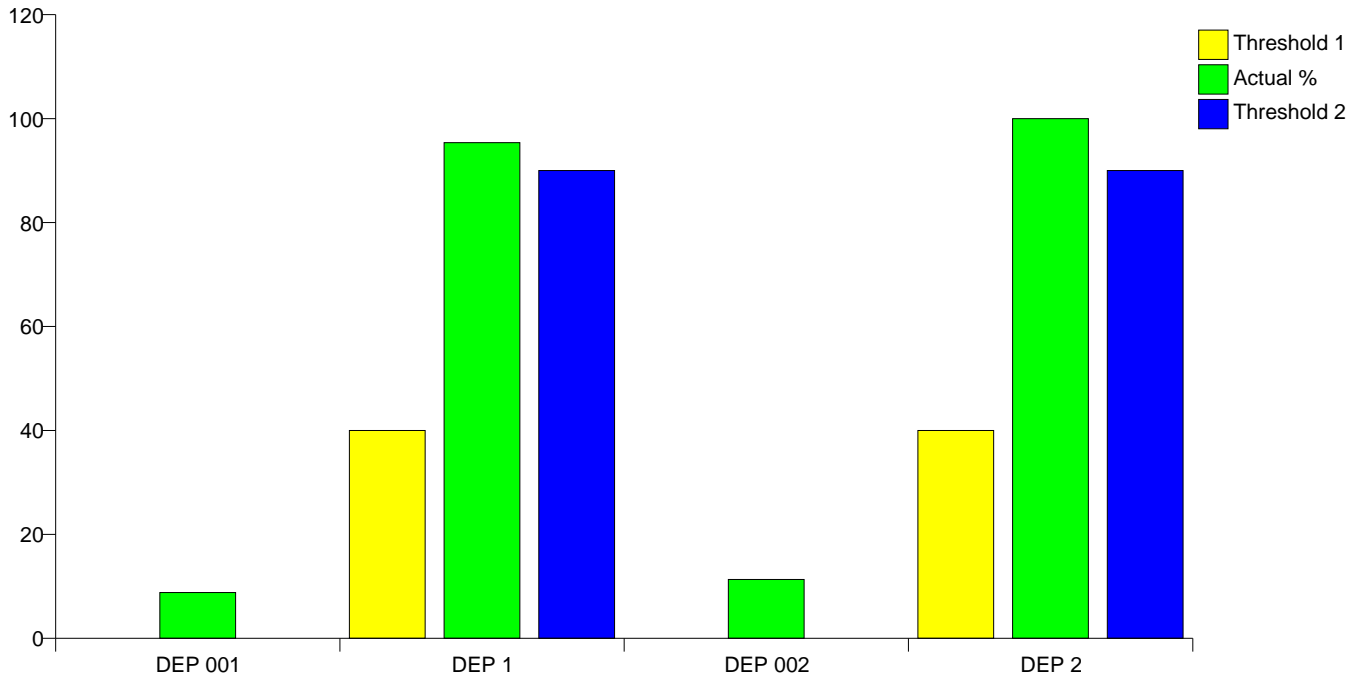


Practice Code: 16507
 Eyemouth Medical Practice

018907 50599

Depression



Clinical Indicator	Number of Patients	Actual %	Minimum Threshold %	Maximum Threshold %
DEP 001	555	8.82	0	0
DEP 1	517	95.39	40	90
DEP 002	713	11.33	0	0
DEP 2	149	100.00	40	90

Clinical Indicators for Depression	
DEP 001	The practice can produce a register of patients with co-morbidity of diabetes or coronary heart disease
DEP 1	The percentage of patients diagnosed with diabetes and/or heart disease for whom case finding for depression has been undertaken on one occasion during the previous 15 months using the two standard screening questions
DEP 002	The practice can produce a register of patients with depression
DEP 2	In those patients with a new diagnosis of depression, recorded between the preceeding 1 April and 31st March, the percentage of patients who have had an assessment of severity at the outset of treatment using an assessment tool validated for use in primary care

Diagnosis and Initial Management

DEP 001

Number of patients registered with the practice	6293
Number of patients with co-morbidity of diabetes or coronary heart disease	555
As % of patients with Depression	8.81932%

DEP 1

Number of patients with Diabetes and/or Heart Disease except where exclusions relevant to DEP 1 apply	542
Number of Patients with Diabetes and/or Heart Disease whose case finding for depression has been undertaken on one occasion during the previous 15 months	517
As % of patients with Depression	95.3875%

DEP 002

Number of patients registered with the practice	6293
Number of patients with Depression	713
As % of patients with Depression	11.33%

DEP 2

Number of patients with a new Diagnosis of depression except where exclusions relevant to DEP 2 apply	149
Number of Patients with a new diagnosis of depression recorded between the preceding 1st April and 31st March	149
As % of patients with Depression	100%