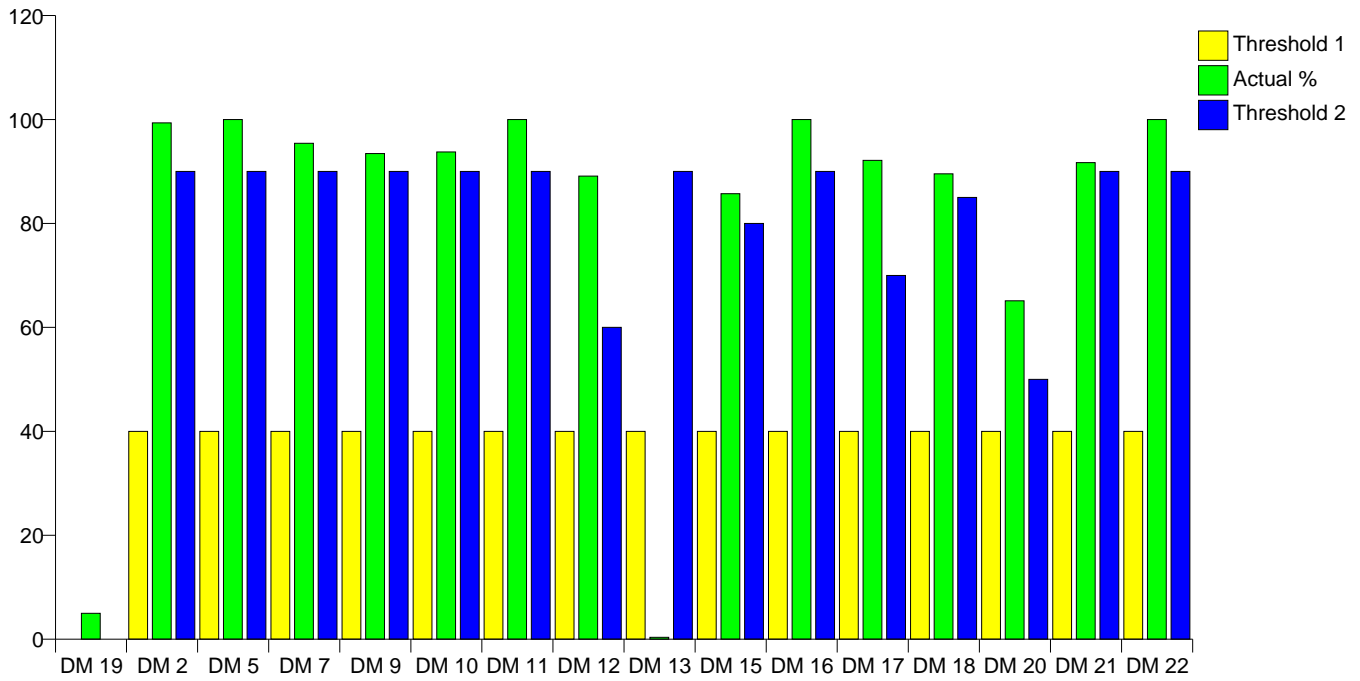


Practice Code: 16507  
 Eyemouth Medical Practice

018907 50599

### Diabetes Mellitus (Diabetes)



Clinical Indicator	Number of Patients	Actual %	Minimum Threshold %	Maximum Threshold %
DM 19	314	4.99	0	0
DM 2	307	99.35	40	90
DM 5	309	100.00	40	90
DM 7	292	95.42	40	90
DM 9	285	93.44	40	90
DM 10	286	93.77	40	90
DM 11	312	100.00	40	90
DM 12	270	89.11	40	60
DM 13	1	0.36	40	90
DM 15	12	85.71	40	80
DM 16	312	100.00	40	90
DM 17	246	92.13	40	70
DM 18	240	89.55	40	85
DM 20	181	65.11	40	50
DM 21	265	91.70	40	90
DM 22	313	100.00	40	90

<b>Clinical Indicators for Diabetes Mellitus (Diabetes)</b>	
DM 19	The practice can produce a register of all patients aged 17 years and over with diabetes mellitus, which specifies whether a patient has Type 1 or Type 2 diabetes
DM 2	The percentage of patients with diabetes whose notes record BMI in the previous 15 months
DM 5	The percentage of patients with diabetes who have a record of HbA1c or equivalent in the previous 15 months
DM 7	The percentage of patients with diabetes in whom the last HbA1C is 10 or less (or equivalent test/reference range depending on local laboratory) in previous 15 months
DM 9	The percentage of patients with diabetes with a record of the presence or absence of peripheral pulses in the previous 15 months
DM 10	The percentage of patients with diabetes with a record of neuropathy testing in the previous 15 months
DM 11	The percentage of patients with diabetes who have a record of the blood pressure in the previous 15 months
DM 12	The percentage of patients with diabetes in whom the last blood pressure is 145/85 or less
DM 13	The percentage of patients with diabetes who have a record of micro-albuminuria testing in the previous 15 months (exception reporting for patients with proteinuria)
DM 15	The percentage of patients with diabetes with a diagnosis of proteinuria or micro-albuminuria who are treated with ACE inhibitors (or A2 antagonists)
DM 16	The percentage of patients with diabetes who have a record of total cholesterol in the previous 15 months
DM 17	The percentage of patients with diabetes whose last measured total cholesterol within the previous 15 months is 5 mmol/l or less
DM 18	The percentage of patients with diabetes who have had influenza immunisation in the preceding 1 September to 31 March
DM 20	The percentage of patients with diabetes in whom the last HbA1C is 7.5 or less (or equivalent test/reference range depending on local laboratory) in the previous 15 months
DM 21	The percentage of patients with diabetes who have a record of retinal screening in the previous 15 months
DM 22	The percentage of patients with diabetes who have a record of estimated glomerular filtration rate (eGFR) or serum creatinine testing in the previous 15 months

## Records

**DM 19**

Number of Patients Registered with Practice	6293
Number of Patients aged 17 or over with Diabetes specifying whether it is Type 1 or Type 2	314
As % of patients registered with practice	4.98967%

## Ongoing Management

### DM 2

Number of Patients with Diabetes except where exclusions relevant to DM 2 apply	309
Number of Patients whose notes record BMI in previous 15 months	307
As % of patients diagnosed with diabetes	99.3528%

### DM 5

Number of Patients with Diabetes except where exclusions relevant to DM 5 apply	309
Number of Patients whose notes have a record of HbA1c within previous 15 months	309
As % of patients diagnosed with diabetes	100%

### DM 7

Number of Patients with Diabetes except where exclusions relevant to DM 7 apply	306
Number of Patients whose last HbA1c in the previous 15 months is 10 or less	292
As % of patients diagnosed with diabetes	95.4248%

### DM 9

Number of Patients with Diabetes except where exclusions relevant to DM 9 apply	305
Number of Patients with presence or absence of peripheral pulses within last 15 months	285
As % of patients diagnosed with diabetes	93.4426%

### DM 10

Number of Patients with Diabetes except where exclusions relevant to DM 10 apply	305
Number of Patients with neuropathy testing within previous 15 months	286
As % of patients diagnosed with diabetes	93.7705%

### DM 11

Number of Patients with Diabetes except where exclusions relevant to DM 11 apply	312
Number of Patients whose notes have a record of blood pressure within last 15 months	312
As % of patients diagnosed with diabetes	100%

**DM 12**

Number of Patients with Diabetes except where exclusions relevant to DM 12 apply	303
Number of Patients with a last BP reading of 145/85 or less within last 15 months	270
As % of patients diagnosed with diabetes	89.1089%

**DM 13**

Number of Patients with Diabetes without Proteinuria except where exclusions relevant to DM 13 apply	274
Number of Patients who have a record of micro-albuminuria testing in the previous 15 months	1
As % of patients diagnosed with diabetes	0.364964%

**DM 15**

Number of Patients with Diabetes with proteinuria or microalbuminuria who are treated with ACE inhibitors or A2 antagonists except where exclusions relevant to DM 15 apply	14
Number of Patients who are treated with ACE inhibitors or A2 antagonists	12
As % of patients diagnosed with diabetes with proteinuria or micro-albuminuria	85.7143%

**DM 16**

Number of Patients with Diabetes except where exclusions relevant to DM 16 apply	312
Number of Patients who have a record of total cholesterol in the previous 15 months	312
As % of patients diagnosed with diabetes	100%

**DM 17**

Number of Patients with Diabetes except where exclusions relevant to DM 17 apply	267
Number of Patients with a last cholesterol measurement of 5 mmol/l or less within last 15 months	246
As % of patients diagnosed with diabetes	92.1348%

**DM 18**

Number of Patients with Diabetes who have a record of influenza immunisation except where exclusions relevant to DM 18 apply	268
Number of Patients who have a record of influenza immunisation	240
As % of patients over diagnosed with diabetes	89.5522%

**DM 20**

Number of Patients with Diabetes except where exclusions relevant to DM 20 apply	278
Number of Patients whose last HbA1c is 7.4 or less	181
As % of patients diagnosed with diabetes	65.1079%

**DM 21**

Number of Patients with Diabetes except where exclusions relevant to DM 21 apply	289
Number of Patients who have a record of retinal screening in previous 15 months	265
As % of patients diagnosed with diabetes	91.6955%

**DM 22**

Number of Patients with Diabetes except where exclusions relevant to DM 22 apply	313
Number of Patients who have a record of estimated glomerular filtration rate or serum creatinine testing in the previous 15 months	313
As % of patients diagnosed with diabetes	100%