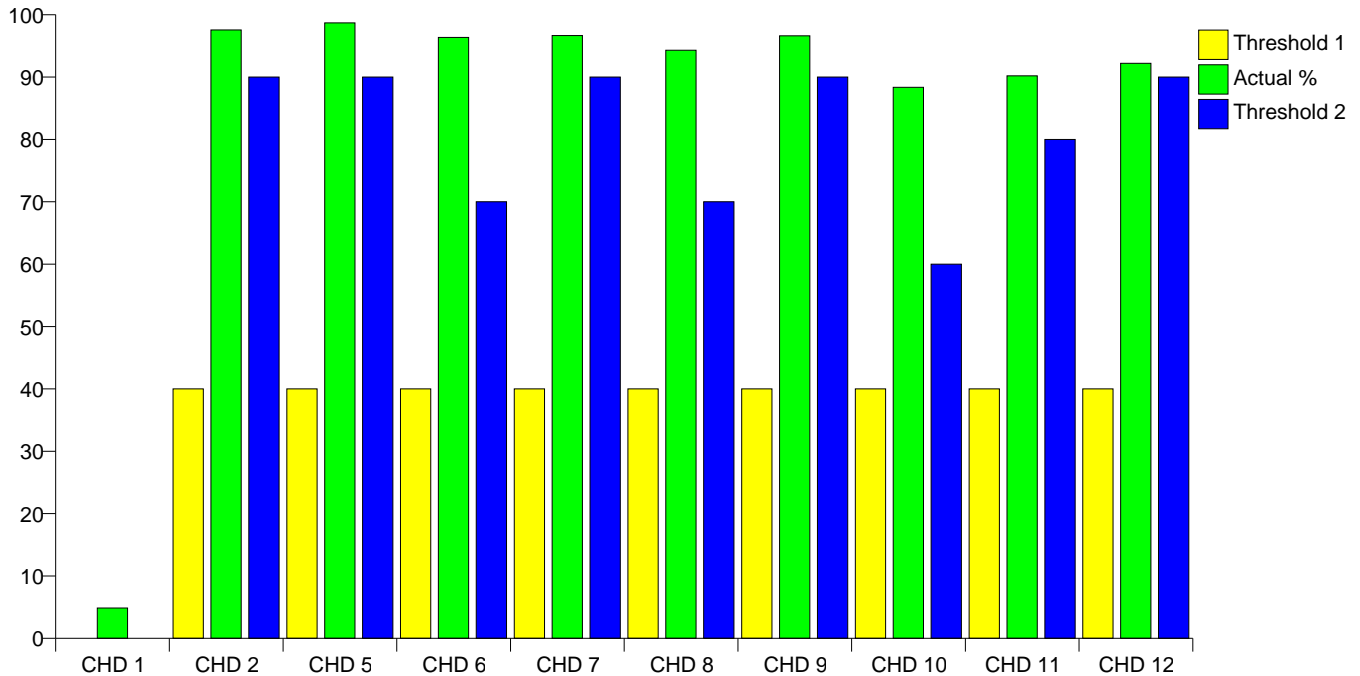


Practice Code: 16507

Eyemouth Medical Practice

018907 50599

Secondary Prevention in Coronary Heart Disease

Clinical Indicator	Number of Patients	Actual %	Minimum Threshold %	Maximum Threshold %
CHD 1	306	4.86	0	0
CHD 2	40	97.56	40	90
CHD 5	301	98.69	40	90
CHD 6	291	96.36	40	70
CHD 7	289	96.66	40	90
CHD 8	265	94.31	40	70
CHD 9	285	96.61	40	90
CHD 10	182	88.35	40	60
CHD 11	46	90.20	40	80
CHD 12	260	92.20	40	90

Clinical Indicators for Secondary Prevention in Coronary Heart Disease	
CHD 1	The practice can produce a register of patients with coronary heart disease
CHD 2	The percentage of patients with newly diagnosed angina (diagnosed after 1 April 2003) who are referred for exercise testing and/or specialist assessment
CHD 5	The percentage of patients with coronary heart disease, whose notes have a record of blood pressure in the previous 15 months
CHD 6	The percentage of patients with coronary heart disease, in whom the last blood pressure reading (measured in the previous 15 months) is 150/90 or less
CHD 7	The percentage of patients with coronary heart disease, whose notes have a record of total cholesterol in the previous 15 months
CHD 8	The percentage of patients with coronary heart disease, whose last measured total cholesterol (measured in the previous 15 months) is 5 mmol/l or less
CHD 9	The percentage of patients with coronary heart disease with a record in the previous 15 months that aspirin, an alternative anti-platelet therapy, or an anti-coagulant is being taken (unless a contraindication or side effects are recorded)
CHD 10	The percentage of patients with coronary heart disease who are currently treated with a beta blocker (unless a contraindication or side-effects are recorded)
CHD 11	The percentage of patients with a history of myocardial infarction (diagnosed after 1 April 2003) who are currently treated with an ACE inhibitor or angiotensin II antagonist
CHD 12	The percentage of patients with coronary heart disease who have a record of influenza immunisation in the preceding 1 September to 31 March

Records

CHD 1

Number of patients Registered with practice	6293
Number of Patients with coronary heart disease	306
As % of patients registered with practice	4.86255%

Diagnosis and initial management

CHD 2

Number of patients with newly diagnosed angina (after 01/04/03)	41
Number of patients referred for exercise testing or specialist assessment	40
As % of patients diagnosed with angina	97.561%

Ongoing Management

CHD 5

Number of patients with coronary heart disease except where exclusions relevant to CHD 5 apply	305
Number of patients whose notes have a record of blood pressure within last 15 months	301
As % of patients diagnosed with coronary heart disease	98.6885%

CHD 6

Number of patients with coronary heart disease except where exclusions relevant to CHD 6 apply	302
Number of patients whose last BP reading was 150/90 or less	291
As % of patients diagnosed with coronary heart disease	96.3576%

CHD 7

Number of patients with coronary heart disease except where exclusions relevant to CHD 7 apply	299
Number of patients whose notes record total cholesterol within last 15 months	289
As % of patients diagnosed with coronary heart disease	96.6555%

CHD 8

Number of patients with coronary heart disease except where exclusions relevant to CHD 8 apply	281
Number of patients with cholesterol measurement 5mmol/l or less within last 15 months	265
As % of patients diagnosed with coronary heart disease	94.3061%

CHD 9

Number of patients with coronary heart disease taking anti-platelet or anti-coagulant therapy within last 15 months except where exclusions relevant to CHD 9 apply	295
Number of patients with CHD taking anti-platelet or anti-coagulant therapy within last 15 months	285
As % of patients diagnosed with coronary heart disease	96.6102%

CHD 10

Number of patients with coronary heart disease begin treated with a beta blocker except where exclusions relevant to CHD 10 apply	206
Number of patients treated with a beta blocker	182
As % of patients diagnosed with coronary heart disease	88.3495%

CHD 11

Number of patients with a history of myocardial infarction diagnosed after 01/04/03	51
Number of patients treated with ACE inhibitors or A2 antagonists	46
As % of patients with a history of myocardial infarction	90.1961%

CHD 12

Number of patients with coronary heart disease who have a record of influenza vaccination except where exclusions relevant to CHD 12 apply	282
Number of patients who have a record of influenza vaccination	260
As % of patients diagnosed with coronary heart disease	92.1986%