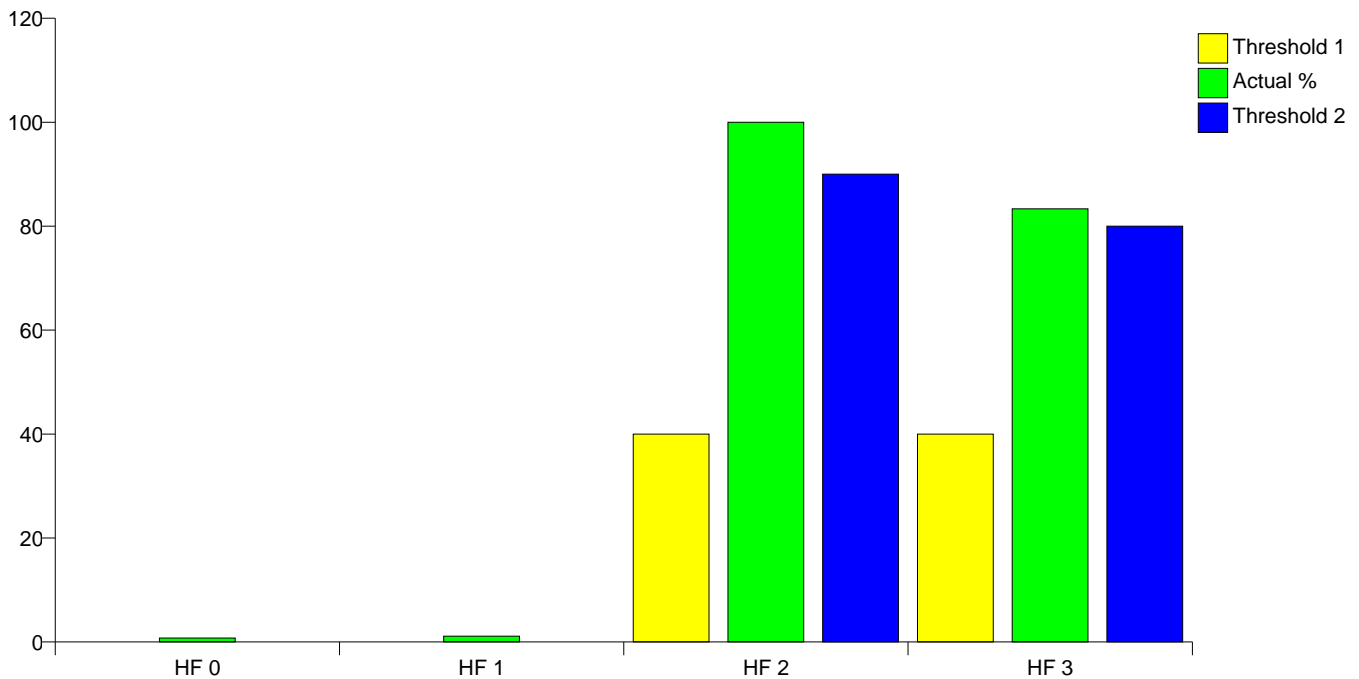


Practice Code: 16507
Eyemouth Medical Practice

018907 50599

Heart Failure



Clinical Indicator	Number of Patients	Actual %	Minimum Threshold %	Maximum Threshold %
HF 0	48	0.76	0	0
HF 1	71	1.13	0	0
HF 2	23	100.00	40	90
HF 3	35	83.33	40	80

Clinical Indicators for Heart Failure	
HF 0	The practice can produce a register of patients with heart failure due to LVD
HF 1	The practice can produce a register of patients with heart failure
HF 2	The percentage of patients with a diagnosis of heart failure (diagnosed after the 1st April 2006) which has been confirmed by an echocardiogram or by specialist assessment
HF 3	The percentage of patients with a current diagnosis of heart failure due to LVD who are currently treated with an ACE inhibitor or Angiotensin Receptor Blocker (unless a contraindication or side effects are recorded)

Records

HF 0

Number of Patients Registered with Practice	6293
Number of patients with Heart Failure due to LVD	48
As % of patients diagnosed with Heart Failure due to LVD	0.762752%

HF 1

Number of Patients Registered with Practice	6293
Number of patients with Heart Failure	71
As % of patients diagnosed with Heart Failure	1.12824%

Ongoing Management

HF 3

Number of patients with a diagnosis of Heart Failure except where exclusions relevant to HF 3 apply	42
Number of Patients with a diagnosis of Heart Failure due to LVD who are currently treated with an ACE inhibitor or Angiotensin Receptor Blocker (unless a contraindication or side effects are recorded)	35
As % of patients with Heart Failure	83.3333%

Initial Diagnosis

HF 2

Number of patients with a diagnosis of Heart Failure except where exclusions relevant to HF 2 apply	23
Number of Patients with a diagnosis of Heart Failure (diagnosed after the 1st April 2006) which has been confirmed by an echocardiogram or by specialist assessment	23
As % of patients with Heart Failure	100%