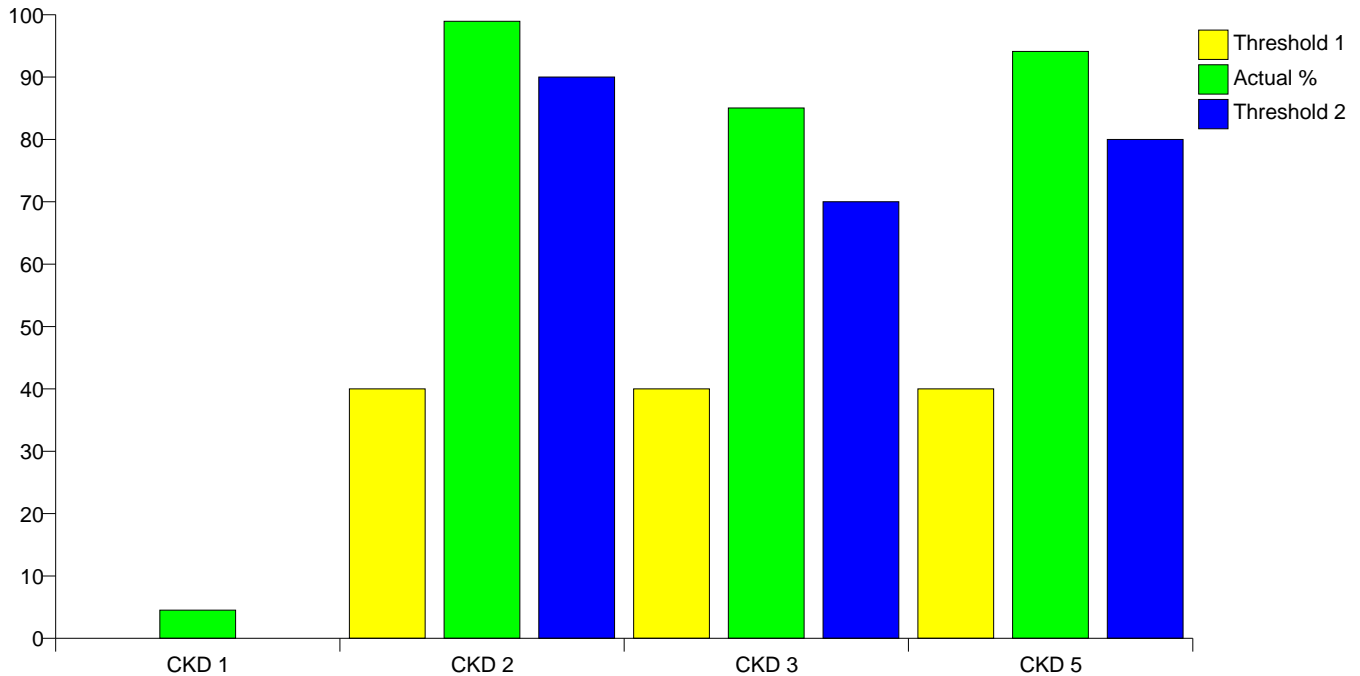


Practice Code: 16507
Eyemouth Medical Practice

018907 50599

Chronic Kidney Disease



Clinical Indicator	Number of Patients	Actual %	Minimum Threshold %	Maximum Threshold %
CKD 1	284	4.51	0	0
CKD 2	280	98.94	40	90
CKD 3	233	85.04	40	70
CKD 5	16	94.12	40	80

Clinical Indicators for Chronic Kidney Disease	
CKD 1	The practice can produce a register of patients aged 18 years and over with CKD. (US National Kidney Foundation: Stage 3-5 CKD)
CKD 2	The percentage of patients on the CKD register whose notes have a record of blood pressure in the previous 15 months
CKD 3	The percentage of patients on the CKD register in whom the last blood pressure reading measured in the previous 15 months, is 140/85 or less
CKD 5	The percentage of patients on the CKD register with hypertension and proteinuria, who are treated with an angiotensin converting enzyme inhibitor (ACE) or angiotensin receptor blocker (ARB) (unless a contraindication or side effects are recorded)

Records

CKD 1

Number of Patients Registered with Practice	6293
Number of patients aged 18 and over with Chronic Kidney Disease	284
As % of patients diagnosed with Chronic Kidney Disease	4.51295%

Initial Management

CKD 2

Number of patients with CKD except where exclusions relevant to CKD 2 apply	283
Number of Patients with CKD with a record of blood pressure in the previous 15 months	280
As % of patients with Chronic Kidney Disease	98.9399%

Ongoing Management

CKD 3

Number of patients with CKD except where exclusions relevant to CKD 3 apply	274
Number of Patients with CKD with a record of blood pressure 140/85 or less in the previous 15 months	233
As % of patients with Chronic Kidney Disease	85.0365%

CKD 5

Number of patients with CKD except where exclusions relevant to CKD 5 apply	17
Number of Patients with CKD with hypertension and proteinuria who are treated with an ACE inhibitor or ARB	16
As % of patients with Chronic Kidney Disease	94.1176%