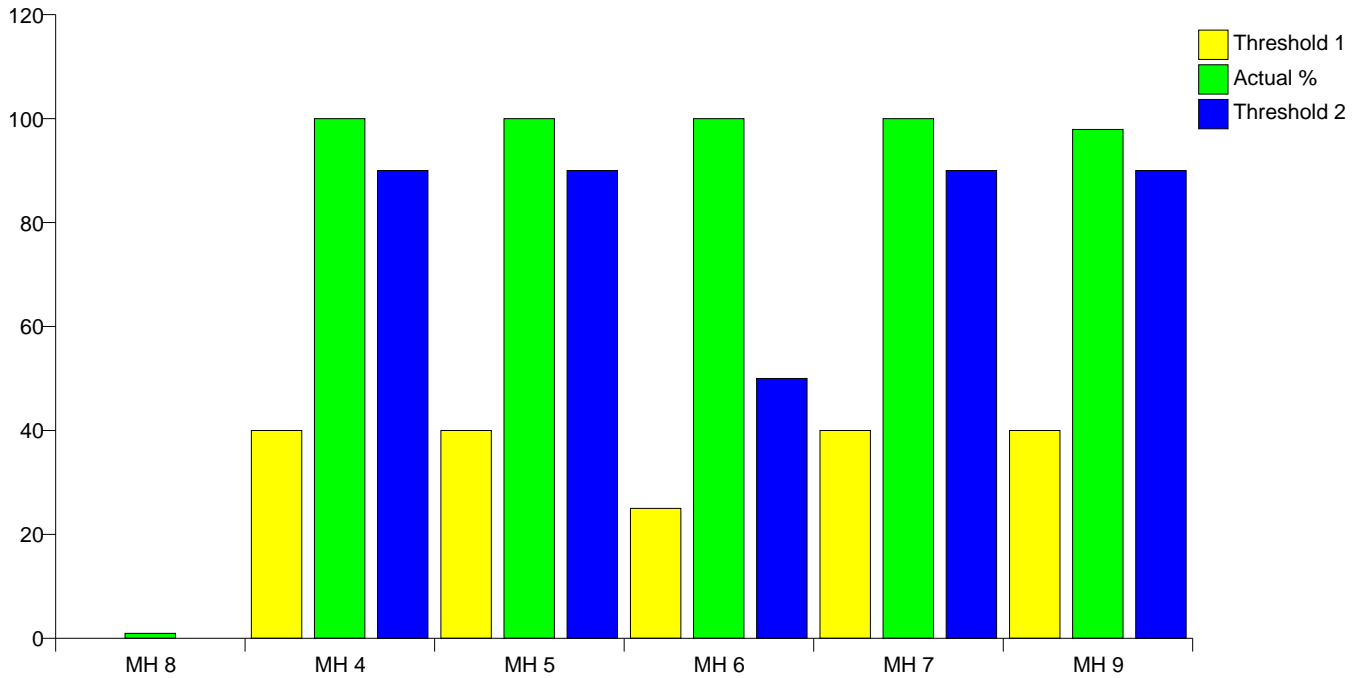


Practice Code: 16507
 Eyemouth Medical Practice

018907 50599

Mental Health



| Clinical Indicator | Number of Patients | Actual % | Minimum Threshold % | Maximum Threshold % |
|--------------------|--------------------|----------|---------------------|---------------------|
| MH 8 | 60 | 0.95 | 0 | 0 |
| MH 4 | 12 | 100.00 | 40 | 90 |
| MH 5 | 12 | 100.00 | 40 | 90 |
| MH 6 | 47 | 100.00 | 25 | 50 |
| MH 7 | 6 | 100.00 | 40 | 90 |
| MH 9 | 47 | 97.92 | 40 | 90 |

| Clinical Indicators for Mental Health | |
|--|---|
| MH 8 | The practice can produce a register of people with schizophrenia, bipolar affective disorder and other psychoses |
| MH 4 | The percentage of patients on lithium therapy with a record of serum creatinine and TSH in the previous 15 months |
| MH 5 | The percentage of patients on lithium therapy with a record of lithium levels in the therapeutic range within the previous 6 months |
| MH 6 | The percentage of patients on the register who have a comprehensive care plan documented in the records agreed between individuals, their family and/or carers as appropriate |
| MH 7 | The percentage of patients with schizophrenia, bipolar affective disorder and other psychoses who do not attend the practice for their annual review who are identified and followed up by practice team within 14 days of non attendance |
| MH 9 | The percentage of patients with schizophrenia and bipolar affective disorder and other psychoses with a review recorded in the previous 15 months. In the review there is evidence that the patient has participated in routine health promotion and prevention advice appropriate to their age and health status |

Records

MH 8

| | |
|---|----------|
| Number of patients Registered with practice | 6293 |
| Number of patients in practice with schizophrenia, bipolar affective disorder and other psychoses | 60 |
| As % of patients registered with practice | 0.95344% |

Ongoing Management

MH 4

| | |
|--|------|
| Number of patients in practice prescribed lithium therapy with a record of serum creatinine in the previous 15 months | 12 |
| Number of patients on lithium therapy and a record of serum creatinine in the previous 15 months AND with a record of TSH in the preceding 15 months | 12 |
| As % of patients on lithium therapy | 100% |

MH 5

| | |
|--|------|
| Number of patients prescribed lithium therapy except where exclusions relevant to Mental Health 5 apply | 12 |
| Number of patients with a record of lithium levels in the therapeutic range within the previous 6 months | 12 |
| As % of patients on lithium therapy | 100% |

MH 6

| | |
|--|------|
| Number of patients who have a comprehensive care plan documented except where exclusions relevant to Mental Health 6 apply | 47 |
| Number of patients who have a comprehensive care plan documented agreed between individuals, their family and/or carers | 47 |
| As % of patients who have a comprehensive care plan | 100% |

MH 7

| | |
|--|------|
| Number of patients with schizophrenia, bipolar affective disorder and other psychoses except where exclusions relevant to Mental Health 7 apply | 6 |
| Number of patients with schizophrenia, bipolar affective disorder and other psychoses who dont attend their annual review | 6 |
| As % of patients who do not attend the practice for their annual review who are identified and followed up by practice team within 14 days of non attendance | 100% |

MH 9

| | |
|--|----------|
| Number of patients in practice with schizophrenia and bipolar affective disorder and other psychoses except where exclusions relevant to Mental Health 9 apply | 48 |
| Patients with schizophrenia and bipolar affective disorder with a review recorded in the preceding 15 months | 47 |
| As % of patients with long term mental health problems | 97.9167% |