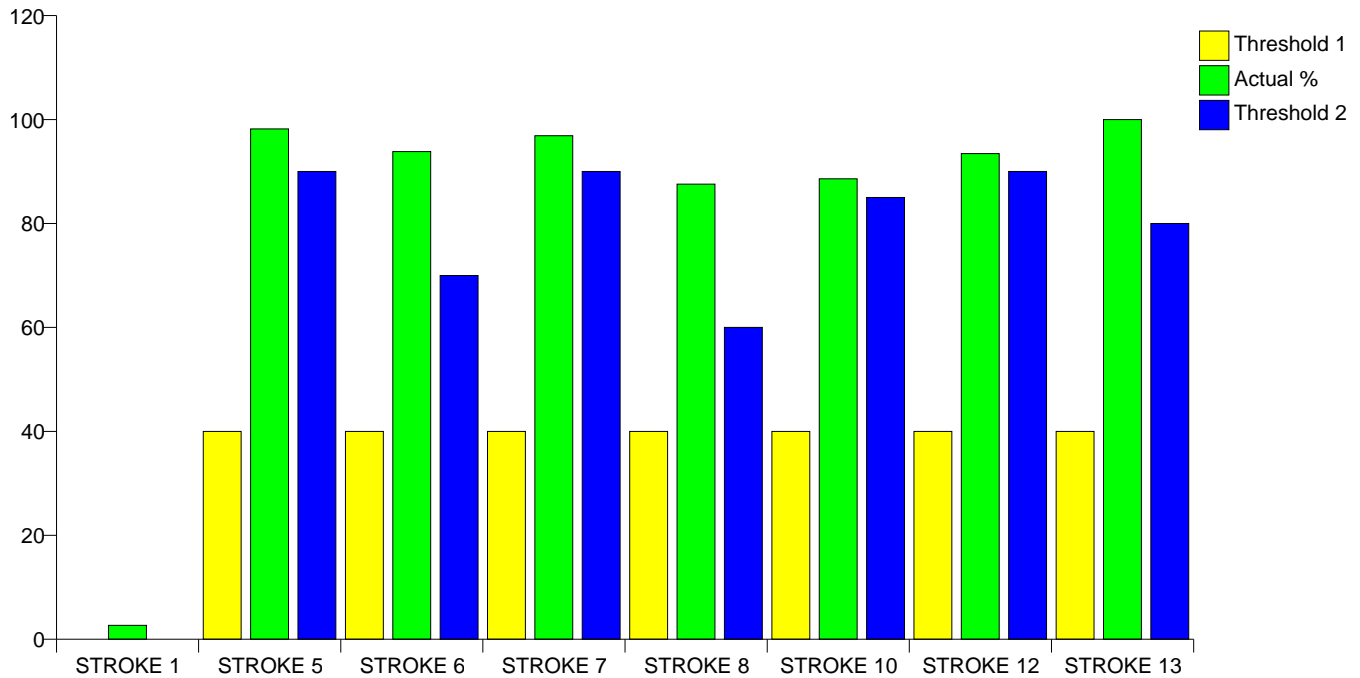


Practice Code: 16507
Eyemouth Medical Practice

018907 50599

Stroke or transient ischaemic attacks



Clinical Indicator	Number of Patients	Actual %	Minimum Threshold %	Maximum Threshold %
STROKE 1	169	2.69	0	0
STROKE 5	163	98.19	40	90
STROKE 6	152	93.83	40	70
STROKE 7	156	96.89	40	90
STROKE 8	134	87.58	40	60
STROKE 10	132	88.59	40	85
STROKE 12	100	93.46	40	90
STROKE 13	13	100.00	40	80

Clinical Indicators for Stroke or transient ischaemic attacks	
STROKE 1	The practice can produce a register of patients with stroke or TIA
STROKE 5	The percentage of patients with TIA or stroke, who have a record of blood pressure in the notes in the preceding 15 months
STROKE 6	The percentage of patients with a history of TIA or stroke, in whom the last blood pressure reading (measured in the previous 15 months) is 150/90 or less
STROKE 7	The percentage of patients with TIA or stroke, who have a record of total cholesterol in the previous 15 months
STROKE 8	The percentage of patients with TIA or stroke, whose last measured total cholesterol (measured in the previous 15 months) is 5 mmol/l or less
STROKE 10	The percentage of patients with TIA or stroke who have had influenza immunisation in the preceding 1st September to 31st March
STROKE 12	The percentage of patients with a stroke shown to be non-haemorrhagic, or a history of TIA, who have a record that an anti-platelet agent (aspirin, clopidogrel, dipyridamole or a combination), or an anti-coagulant is being taken (unless a contraindication or side-effects are recorded)
STROKE 13	The percentage of new patients with a stroke or TIA who have been referred for further investigation

Records

STROKE 1

Number of patients Registered with practice	6293
Number of patients with Stroke or Transient Ischaemic Attacks	169
As % of patients registered with practice	2.68552%

STROKE 13

Number of patients with a Stroke or TIA except where relevant exclusions for Stroke 13 apply	13
Number of patients who have been referred for further investigation	13
As % of patients with Presumptive Stroke	100%

Ongoing Management

STROKE 5

Number of patients with Stroke or Transient Ischaemic Attacks except where relevant exclusions for Stroke 5 apply	166
Number of patients who have a record of blood pressure in the notes in the preceding 15 months	163
As % of patients with Stroke or Transient Ischaemic Attacks	98.1928%

STROKE 6

Number of patients with Stroke or Transient Ischaemic Attacks except where relevant exclusions for Stroke 6 apply	162
Number of patients whose latest BP reading (measured in the previous 15 months) is 150/90 or less	152
As % of patients with Stroke or Transient Ischaemic Attacks	93.8272%

STROKE 7

Number of patients with Stroke or Transient Ischaemic Attacks except where relevant exclusions for Stroke 7 apply	161
Number of patients who have a record of total cholesterol in the previous 15 months	156
As % of patients with Stroke or Transient Ischaemic Attacks	96.8944%

STROKE 8

Number of patients with Stroke or Transient Ischaemic Attacks except where relevant exclusions for Stroke 8 apply	153
Number of patients whose last measured total cholesterol (measured in the previous 15 months) is 5 mmol/l or less	134
As % of patients with Stroke or Transient Ischaemic Attacks	87.5817%

STROKE 10

Number of patients with Stroke or Transient Ischaemic Attacks	149
Number of patients who have a record of influenza immunisation in the preceding 1st September to 31st March	132
As % of patients with Stroke or Transient Ischaemic Attacks	88.5906%

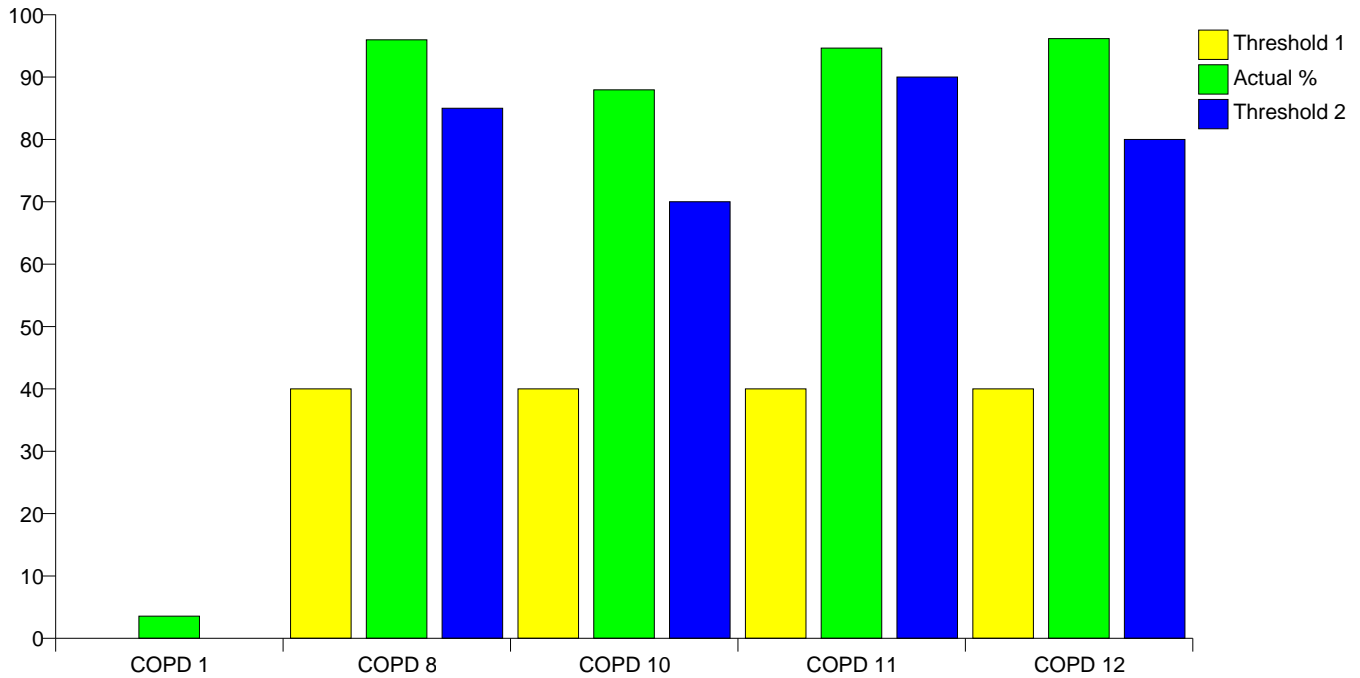
STROKE 12

Number of patients with a stroke shown to be non-haemorrhagic, or a history of TIA with no contraindication / side effect recorded	107
Number of patients prescribed an anti-platelet agent or an anti-coagulant	100
As % of patients with a stroke shown to be non-haemorrhagic, or a history of TIA with no contraindication / side effect recorded	93.4579%

Practice Code: 16507
 Eyemouth Medical Practice

018907 50599

Chronic Obstructive Pulmonary Disease (COPD)



Clinical Indicator	Number of Patients	Actual %	Minimum Threshold %	Maximum Threshold %
COPD 1	224	3.56	0	0
COPD 8	190	95.96	40	85
COPD 10	168	87.96	40	70
COPD 11	159	94.64	40	90
COPD 12	25	96.15	40	80